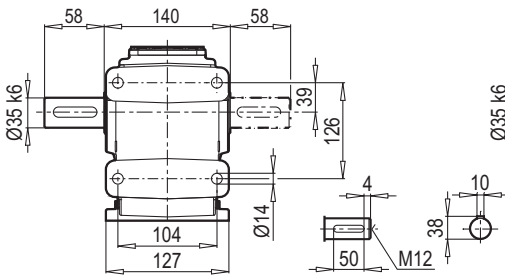
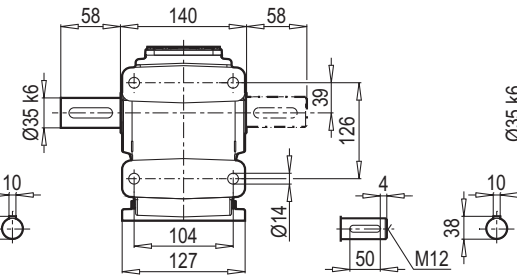


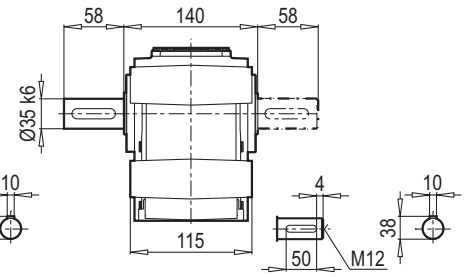
TMA / ÇMA



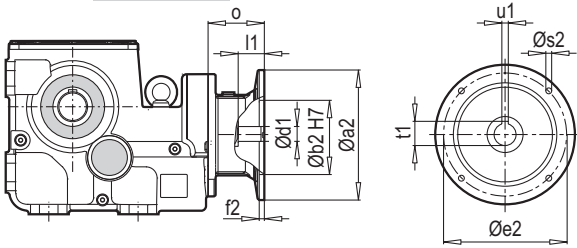
TMA / ÇMA / B14



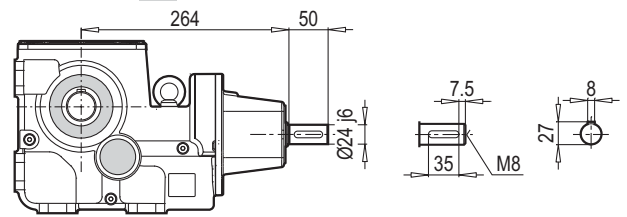
TMG / ÇMG / B14



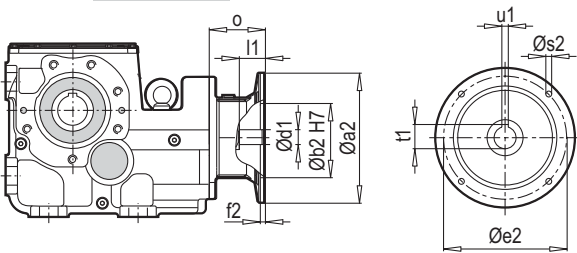
K 35390 PAM B5/B14



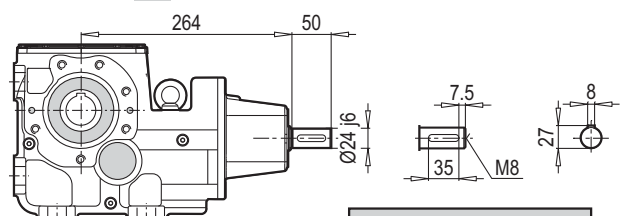
K 35390 W



K 35390 PAM B5/B14

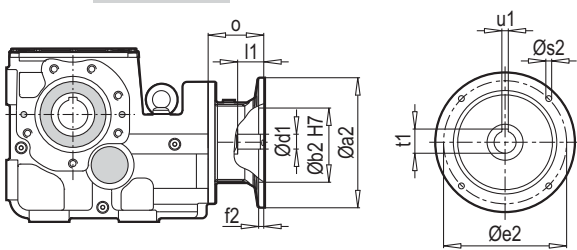


K 35390 W

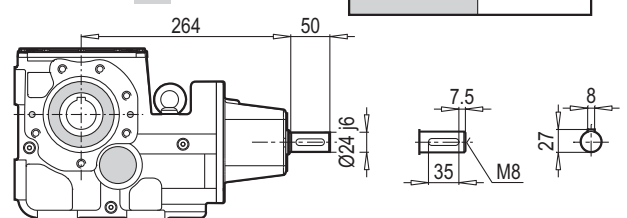


W ~ Kg	
K 35390	24

K 35390 PAM B5/B14



K 35390 W



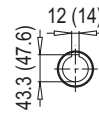
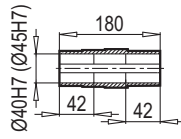
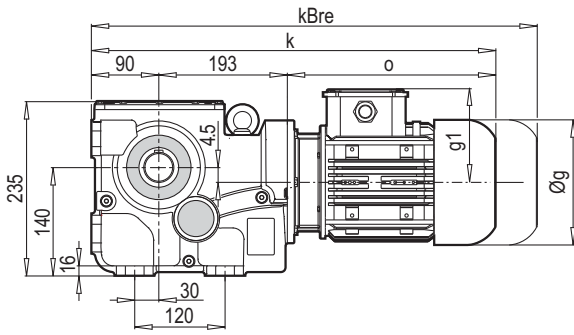
Typ / Type / Tipo Type / Tipo	PAM B5	Øa2	Øb2	Øe2	f2	Øs2	Ød1	l1	t1	u1	o
K 35390	63	140	95	115	4.5	8	11	25	12.8	4	57
	71	160	110	130	5	8	14	32	16.3	5	69
	80	200	130	165	5	10	19	42	21.8	6	90
	90	200	130	165	5	10	24	52	27.3	8	90
	100	250	180	215	5.5	12	28	62	31.3	8	105
	112	250	180	215	5.5	12	28	62	31.3	8	105

~ Kg	
PAM B5	K 35390
63	21
71	22
80	23
90	23
100	27
112	27

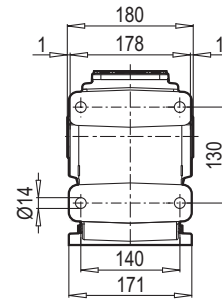
Typ / Type / Tipo Type / Tipo	PAM B14	Øa2	Øb2	Øe2	f2	Øs2	Ød1	l1	t1	u1	o
K 35390	63	90	60	75	2.5	6	11	25	12.8	4	57
	71	105	70	85	2.5	7	14	32	16.3	5	69
	80	120	80	100	3	7	19	42	21.8	6	90
	90	140	95	115	3	9	24	52	27.3	8	90
	100	160	110	130	3.5	9	28	62	31.3	8	105
	112	160	110	130	3.5	9	28	62	31.3	8	105

~ Kg	
PAM B14	K 35390
63	20
71	21
80	22
90	22
100	24
112	24

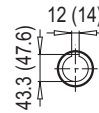
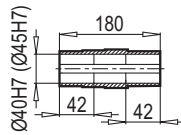
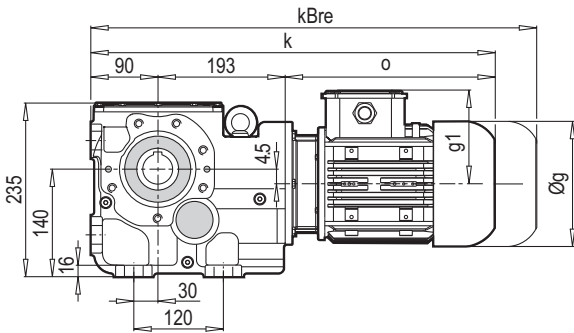
K 40390



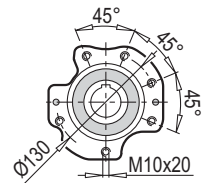
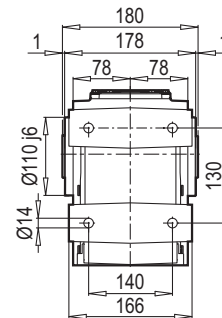
DA



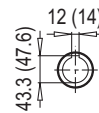
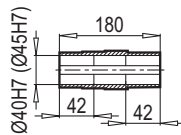
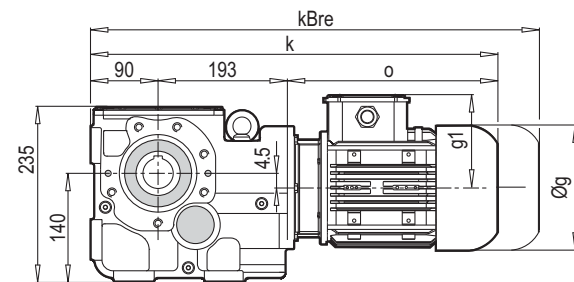
K 40390



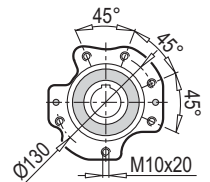
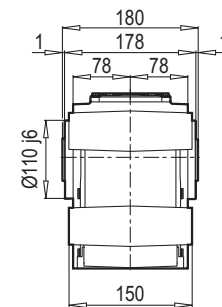
DA / B14



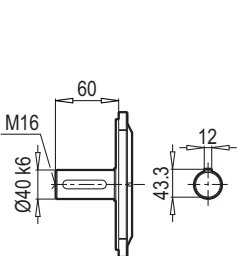
K 40390



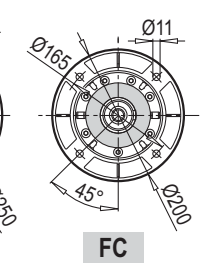
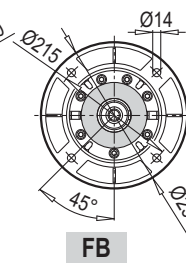
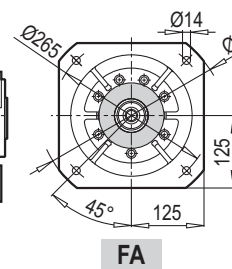
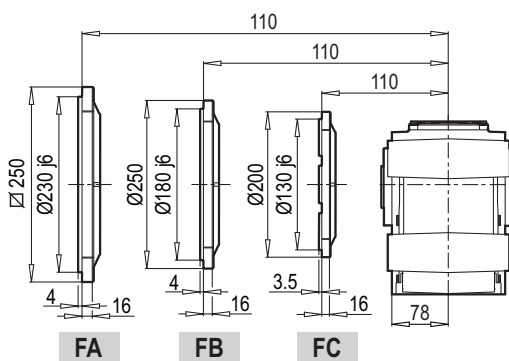
DG / B14



TMG / B5



DG / B5



FA

FB

FC

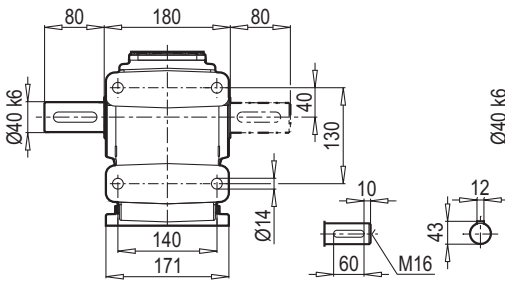
FA

FB

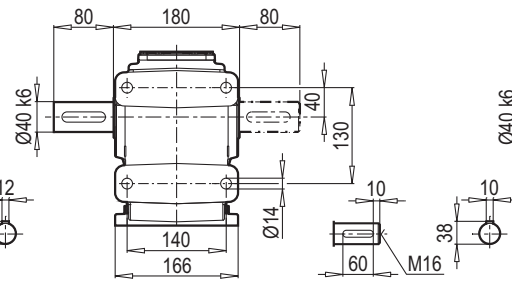
FC

	80M	90S	90L	100L	112M	132S	132M	160M
g	159	193	193	217	232	279	279	323
g1	127	151	151	160	168	182	182	200
k	530	576	596	619	672	679	714	801
kBre	592	649	669	700	752	787	855	953
o	247	293	313	336	389	396	431	518

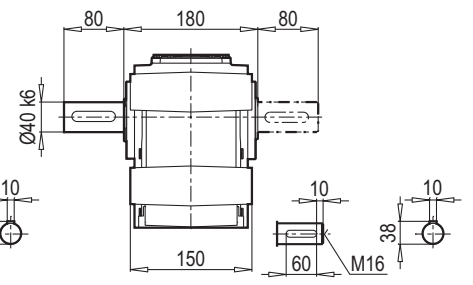
TMA - ÇMA



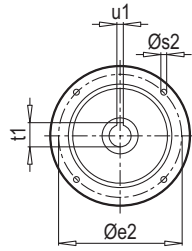
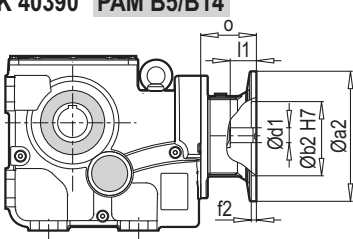
TMA - ÇMA / B14



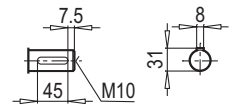
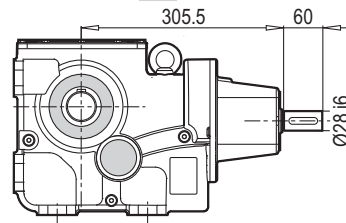
TMG - ÇMG / B14



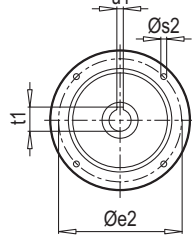
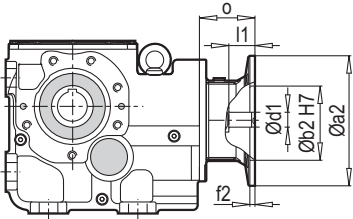
K 40390 PAM B5/B14



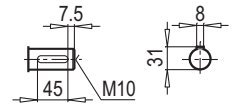
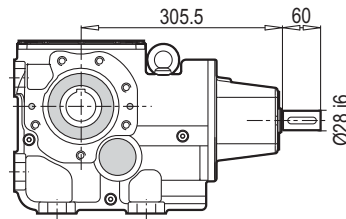
K 40390 W



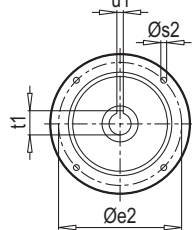
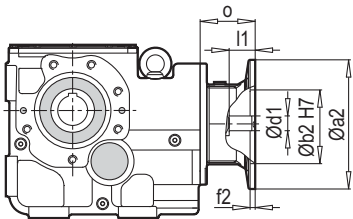
K 40390 PAM B5/B14



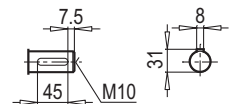
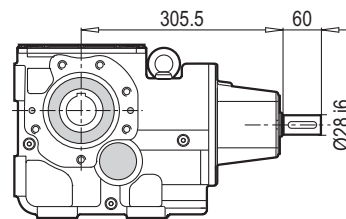
K 40390 W



K 40390 PAM B5/B14



K 40390 W



W ~ Kg	
K40390	35

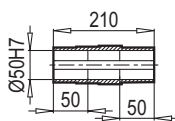
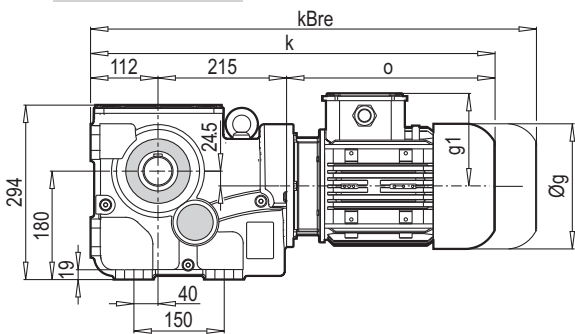
Typ / Type / Tipo Type / Tipo	PAM B5	Øa2	Øb2	Øe2	f2	Øs2	Ød1	l1	t1	u1	o
K 40390	80	200	130	165	5	10	19	42	21.8	6	70
	90	200	130	165	5	10	24	52	27.3	8	70
	100	250	180	215	5.5	12	28	62	31.3	8	85
	112	250	180	215	5.5	12	28	62	41.3	8	85
	132	300	230	265	5.5	12	38	82	31.3	10	110

~ Kg	
PAM B5	K 40390
80	33
90	33
100	35
112	35
132	39

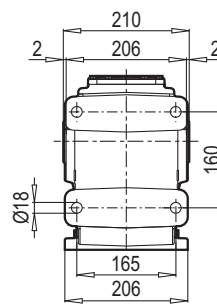
Typ / Type / Tipo Type / Tipo	PAM B14	Øa2	Øb2	Øe2	f2	Øs2	Ød1	l1	t1	u1	o
K40390	80	120	80	100	3	7	19	42	21.8	6	70
	90	140	95	115	3	9	24	52	27.3	8	70
	100	160	110	130	3.5	9	28	62	31.3	8	85
	112	160	110	130	3.5	9	28	62	31.3	8	85
	132	200	130	165	3.5	11	38	82	41.3	10	110

~ Kg	
PAM B14	K 40390
80	29
90	29
100	31
112	31
132	36

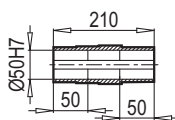
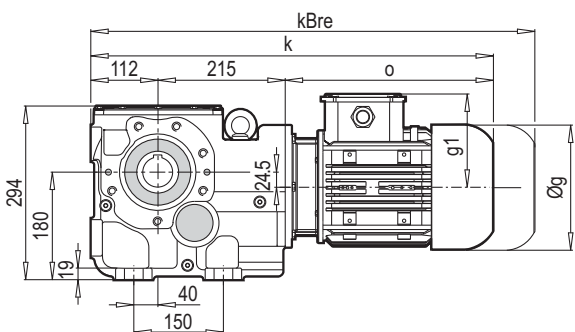
K 50390



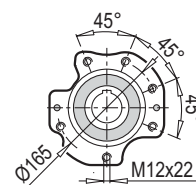
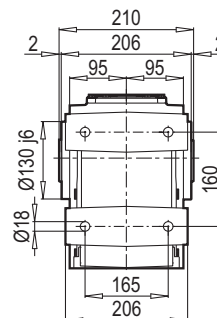
DA



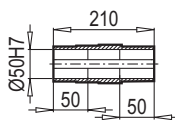
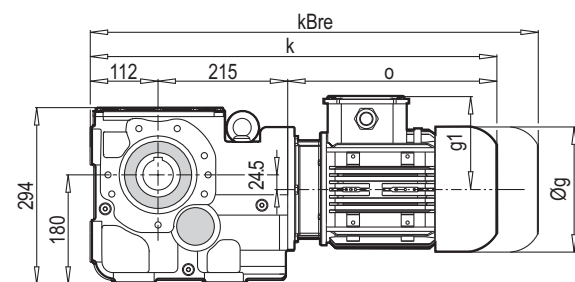
K 50390



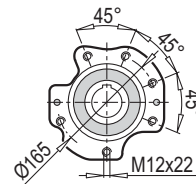
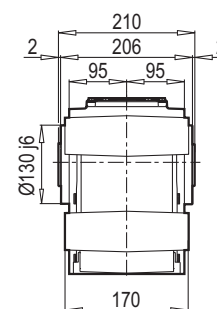
DA / B14



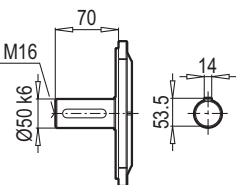
K 50390



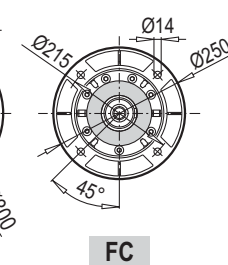
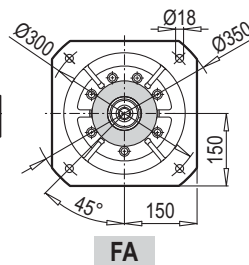
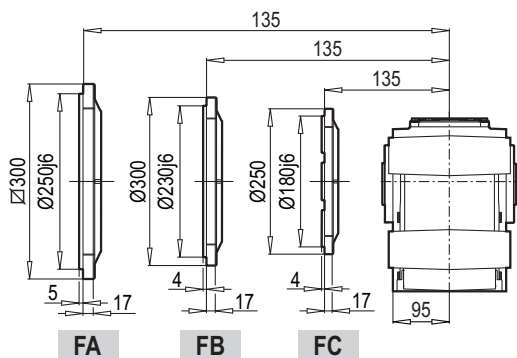
DG / B14



TMG / B5



DG / B5



FA

FB

FC

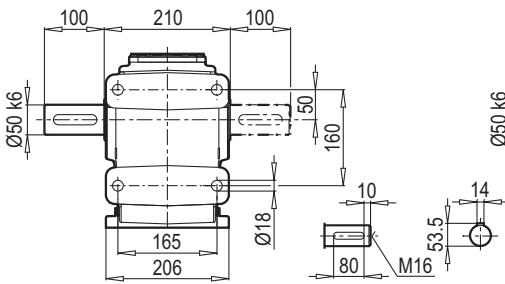
FA

FB

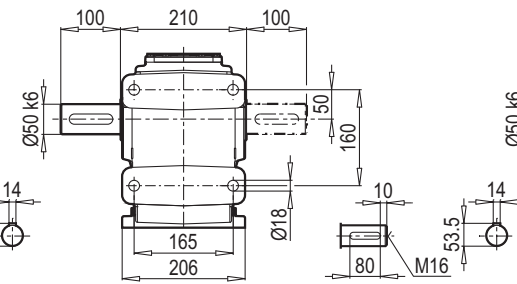
FC

	80M	90S	90L	100L	112M	132S	132M	160M/L
g	159	193	193	217	232	279	279	323
g1	127	151	151	160	168	182	182	200
k	574	620	640	663	716	723	758	845
kBre	636	693	713	744	796	831	899	997
o	247	293	313	336	389	396	431	518

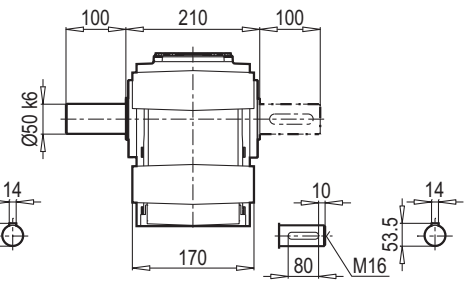
TMA - ÇMA



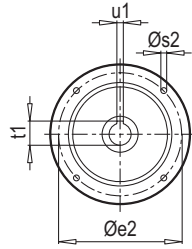
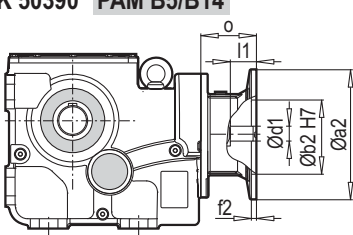
TMA - ÇMA / B14



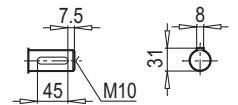
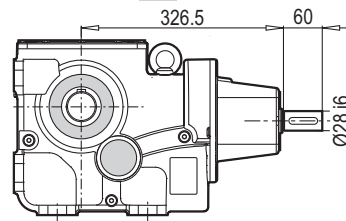
TMG - ÇMG / B14



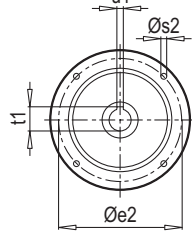
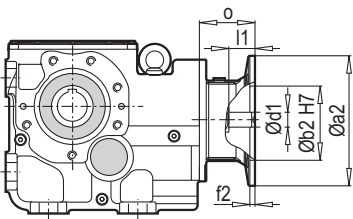
K 50390 PAM B5/B14



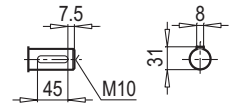
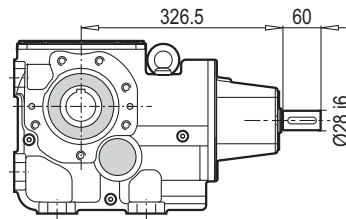
K 50390 W



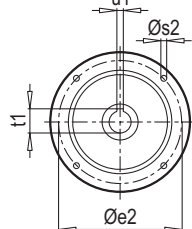
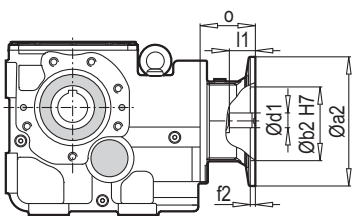
K 50390 PAM B5/B14



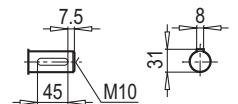
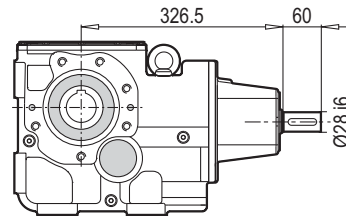
K 50390 W



K 50390 PAM B5/B14



K 50390 W



W ~ Kg	
K 50390	61

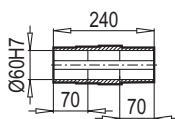
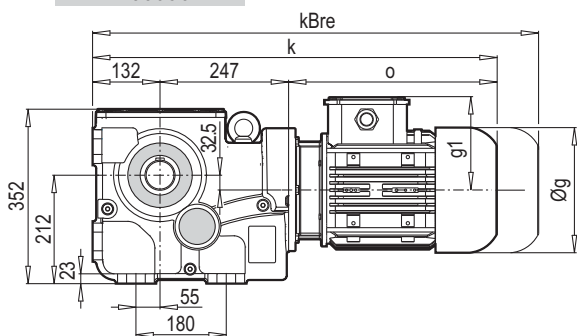
Typ / Type / Tipo Type / Tipo	PAM B5	Øa2	Øb2	Øe2	f2	Øs2	Ød1	l1	t1	u1	o
K 50390	80	200	130	165	5	10	19	42	21.8	6	70
	90	200	130	165	5	10	24	52	27.3	8	70
	100	250	180	215	5.5	12	28	62	31.3	8	85
	112	250	180	215	5.5	12	28	62	31.3	8	85
	132	300	230	265	5.5	12	38	82	41.3	10	110
	160	350	250	300	7	16	42	112	45.3	12	158

~ Kg	
PAM B5	K 50390
80	59
90	59
100	61
112	61
132	65
160	72

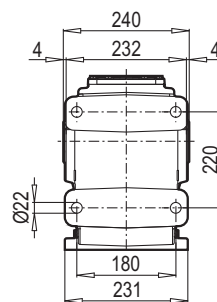
Typ / Type / Tipo Type / Tipo	PAM B14	Øa2	Øb2	Øe2	f2	Øs2	Ød1	l1	t1	u1	o
K 50390	80	120	80	100	3	7	19	42	21.8	6	70
	90	140	95	115	3	9	24	52	27.3	8	70
	100	160	110	130	3.5	9	28	62	31.3	8	85
	112	160	110	130	3.5	9	28	62	31.3	8	85
	132	200	130	165	3.5	11	38	82	41.3	10	110

~ Kg	
PAM B14	K 50390
80	55
90	55
100	57
112	57
132	62

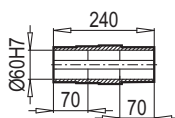
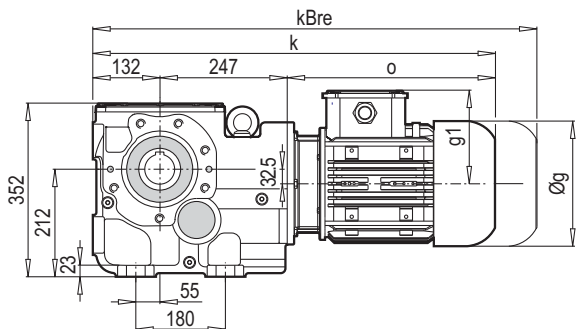
K 60390



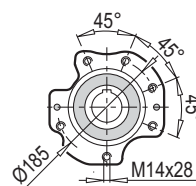
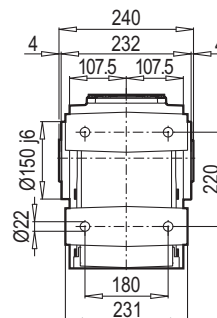
DA



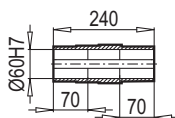
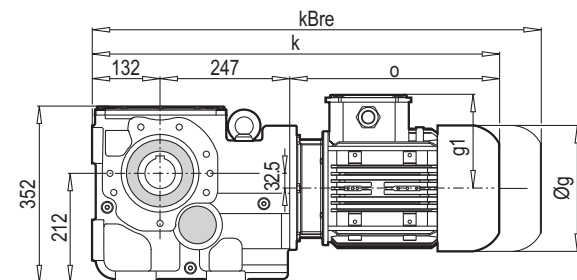
K 60390



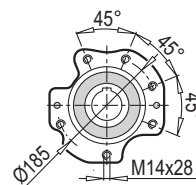
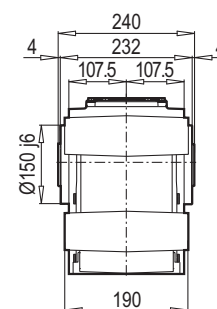
DA / B14



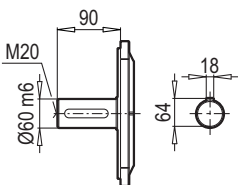
K 60390



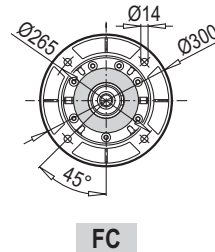
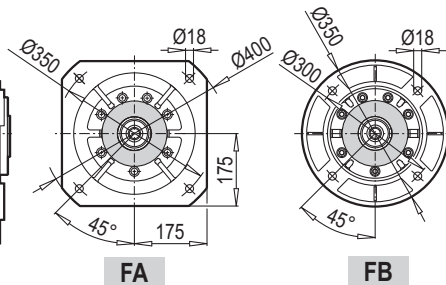
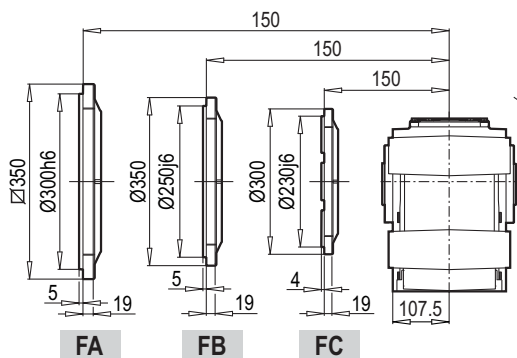
DG / B14



TMG / B5



DG / B5



FA

FB

FC

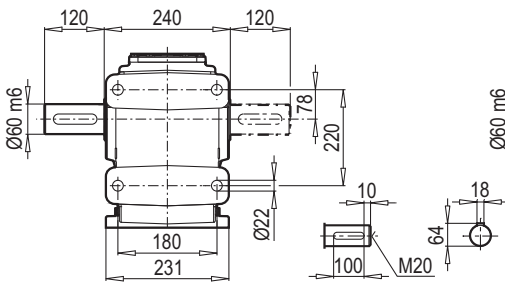
FA

FB

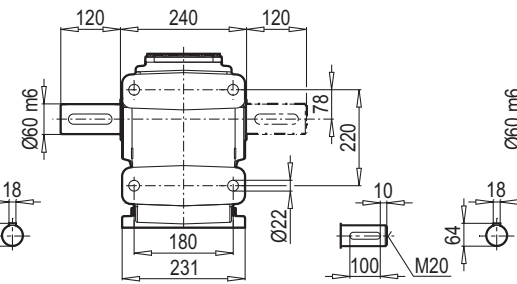
FC

	90S	90L	100L	112M	132S	132M	160M/L	180M/L
g	193	193	217	232	279	279	323	370
g1	151	151	160	168	182	182	200	248
k	662	682	705	759	765	800	887	952
kBre	735	755	786	839	873	941	1039	1114
o	283	303	326	380	386	421	508	573

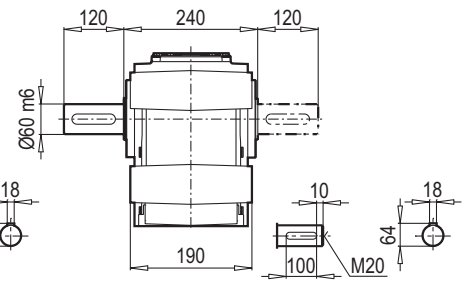
TMA - ÇMA



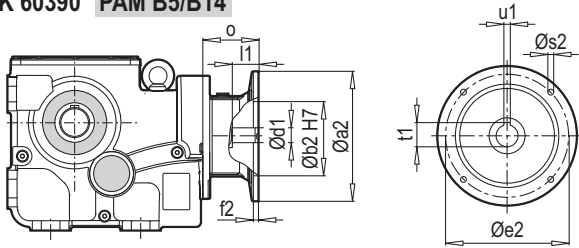
TMA - ÇMA / B14



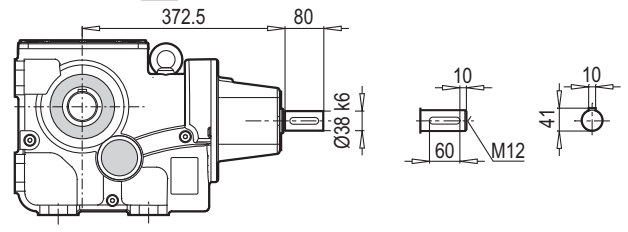
TMG - ÇMG / B14



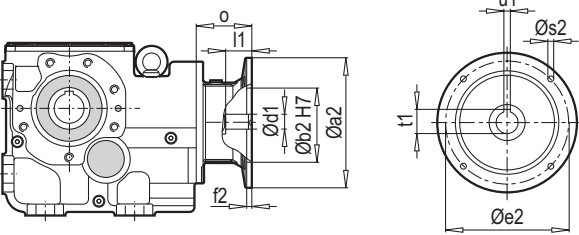
K 60390 PAM B5/B14



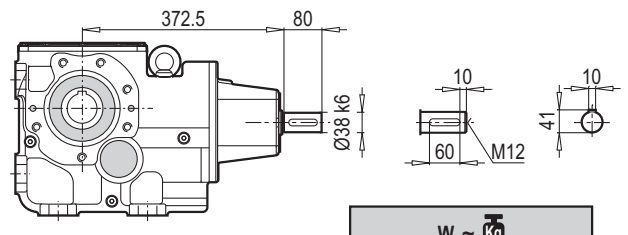
K 60390 W



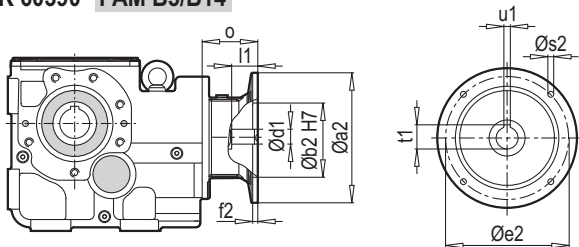
K 60390 PAM B5/B14



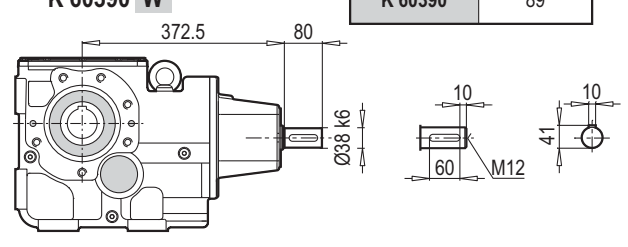
K 60390 W



K 60390 PAM B5/B14



K 60390 W



W ~ Kg	
K 60390	89

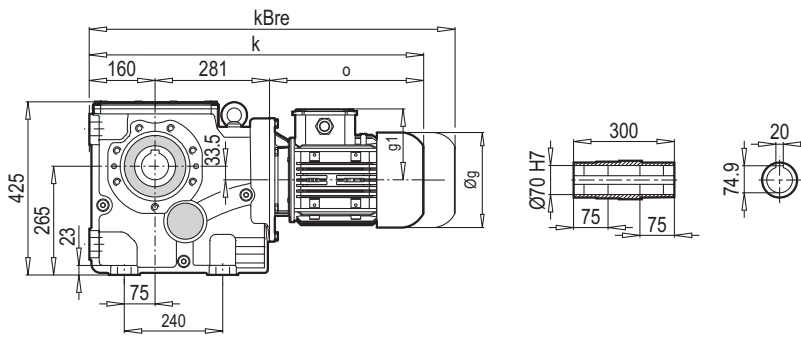
Typ / Type / Tipo Type / Tipo	PAM B5	Øa2	Øb2	Øe2	f2	Øs2	Ød1	l1	t1	u1	o
K 60390	90	200	130	165	5	10	24	52	27.3	8	61
	100	250	180	215	5.5	12	28	62	31.3	8	76
	112	250	180	215	5.5	12	28	62	31.3	8	76
	132	300	230	265	5.5	12	38	82	41.3	10	101
	160	350	250	300	7	16	42	112	45.3	12	148
	180	350	250	300	7	16	48	112	51.8	14	148

~ Kg	
PAM B5	K 60390
90	80
100	84
112	84
132	87
160	93
180	93

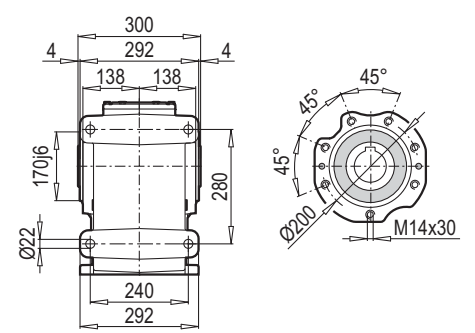
Typ / Type / Tipo Type / Tipo	PAM B14	Øa2	Øb2	Øe2	f2	Øs2	Ød1	l1	t1	u1	o
K 60390	90	140	95	115	3	9	24	52	27.3	8	61
	100	160	110	130	3.5	9	28	62	31.3	8	76
	112	160	110	130	3.5	9	28	62	31.3	8	76
	132	200	130	165	3.5	11	38	82	41.3	10	101

~ Kg	
PAM B14	K 60390
90	77
100	79
112	79
132	85

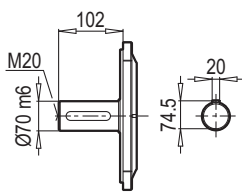
K 70390



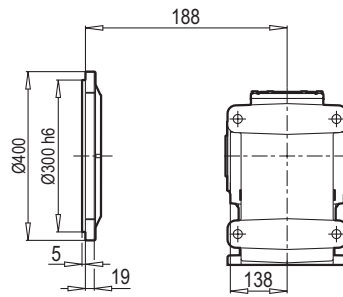
DA / B14



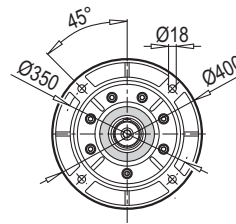
TMG / B5



DG / B5



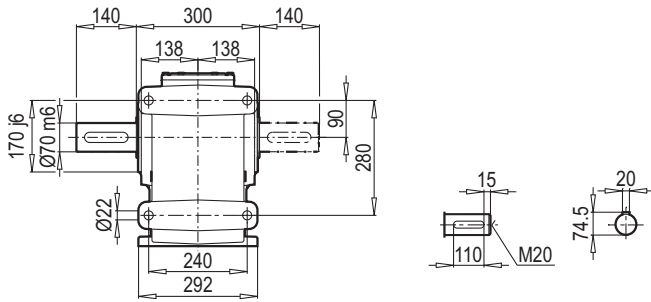
FB



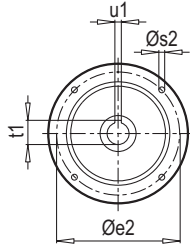
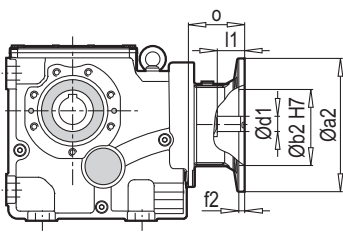
FB

	100L	112M	132S	132M	160M/L	180M/L	200L		
g	217	232	279	279	323	370	415		
g1	160	168	182	182	200	248	260		
k	767	821	827	862	949	1014	1051		
kBre	848	901	935	1003	1101	1176	1198		
o	326	380	386	421	508	573	610		

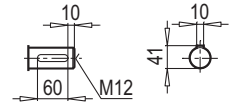
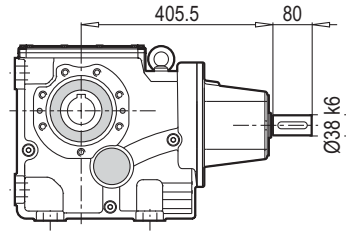
TMA - ÇMA / B14



K 70390 PAM B5/B14



K 70390 W



W ~ Kg	
K 70390	134.5

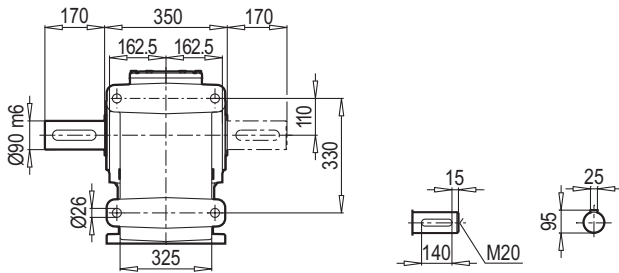
Typ / Type / Tipo Type / Tipo	PAM B5	Øa2	Øb2	Øe2	f2	Øs2	Ød1	l1	t1	u1	o
K 70390	100	250	180	215	5.5	12	28	62	31.3	8	76
	112	250	180	215	5.5	12	28	62	31.3	8	76
	132	300	230	265	5.5	12	38	82	41.3	10	101
	160	350	250	300	7	16	42	112	45.3	12	148
	180	350	250	300	7	16	48	112	51.8	14	148
	200	400	300	350	7	16	55	112	59.3	16	185

~ Kg	
PAM B5	K 70390
100	129.5
112	129.5
132	132.5
160	138.5
180	138.5
200	154.5

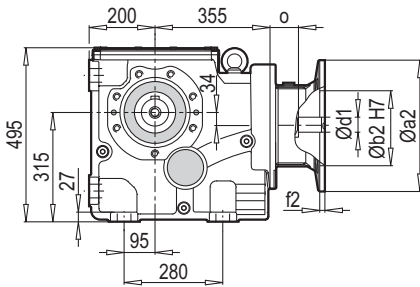
Typ / Type / Tipo Type / Tipo	PAM B14	Øa2	Øb2	Øe2	f2	Øs2	Ød1	l1	t1	u1	o
K 70390	100	160	110	130	3.5	9	28	62	31.3	8	76
	112	160	110	130	3.5	9	28	62	31.3	8	76
	132	200	130	165	3.5	11	38	82	41.3	10	101

~ Kg	
PAM B14	K 70390
100	125
112	125
132	131

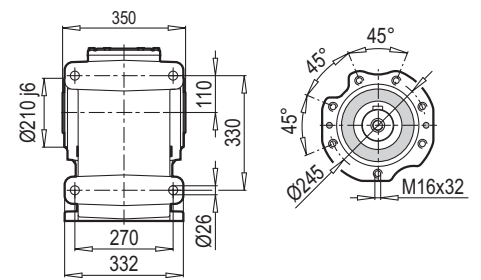
TMA - ÇMA / B14



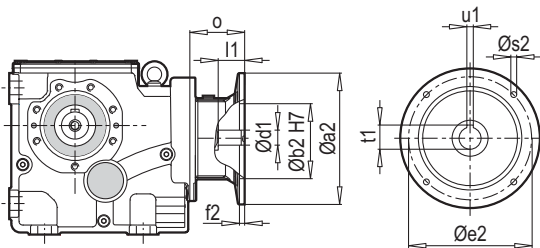
K 90390 PAM B5/B14



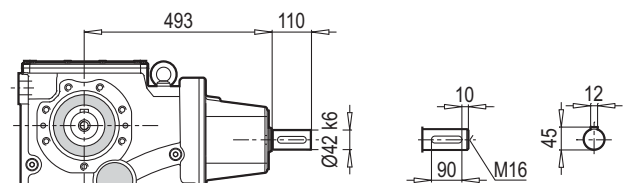
DA / B14



K 90390 PAM B5/B14

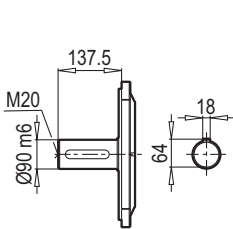


K 90390 W

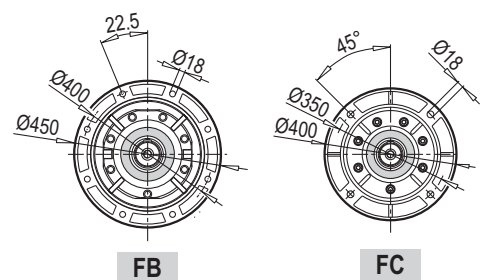
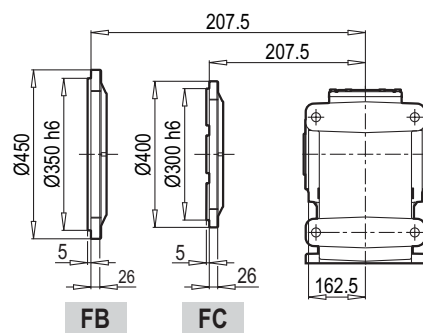


W ~ Kg	
K 90390	216.5

TMA / B5



DG / B5



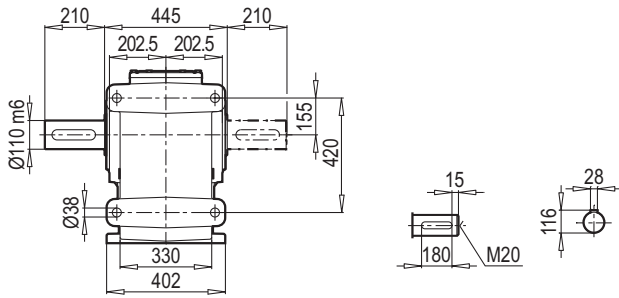
Typ / Type / Tipo Type / Tipo	PAM B5	Øa2	Øb2	Øe2	f2	Øs2	Ød1	l1	t1	u1	o
K 90390	132	300	230	265	5.5	12	38	82	41.3	10	76
	160	350	250	300	7	16	42	112	45.3	12	124
	180	350	250	300	7	16	48	112	51.8	14	124
	200	400	300	350	7	16	55	112	59.3	16	161
	225	450	350	400	7	16	60	142	64.4	18	161

~ Kg	
PAM B5	K 90390
132	203.5
160	211.5
180	211.5
200	226.5
225	229.5

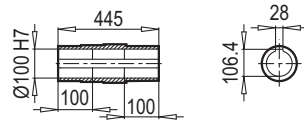
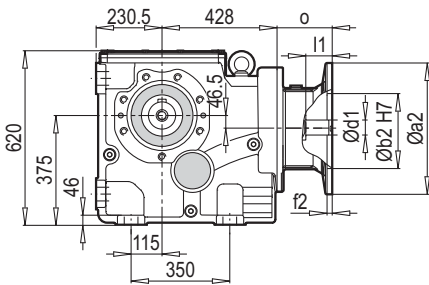
Typ / Type / Tipo Type / Tipo	PAM B14	Øa2	Øb2	Øe2	f2	Øs2	Ød1	l1	t1	u1	o
K 90390	132	200	130	165	3.5	11	38	82	41.3	10	76

~ Kg	
PAM B14	K 90390
132	197

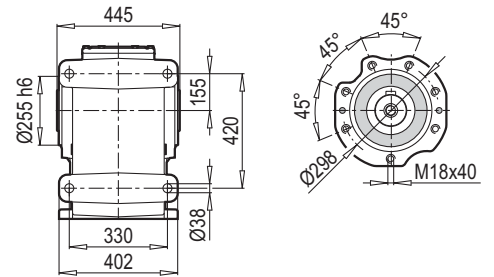
TMA - ÇMA / B14



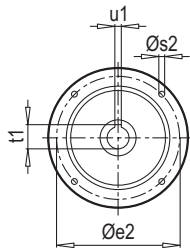
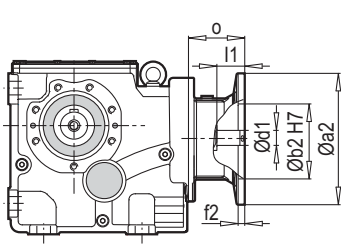
K 100390 PAM B5/B14



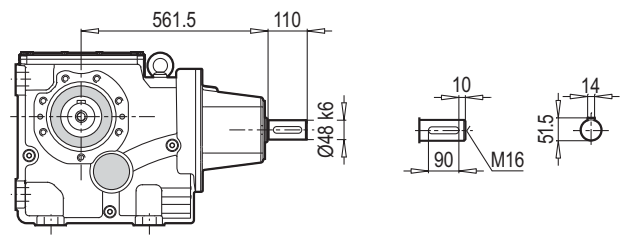
DA / B14



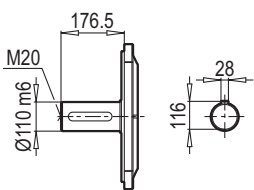
K 100390 PAM B5/B14



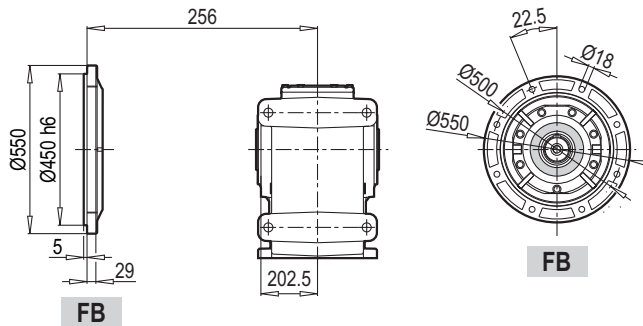
K 100390 W



TMA / B5



DA / B5



W ~ Kg	
K 100390	460

Typ / Type / Tipo Type / Tipo	PAM B5	Øa2	Øb2	Øe2	f2	Øs2	Ød1	l1	t1	u1	o
K 100390	160	350	250	300	7	16	42	112	45.3	12	109
	180	350	250	300	7	16	48	112	51.8	14	109
	200	400	300	350	7	16	55	112	59.3	16	146
	225	450	350	400	7	16	60	142	64.4	18	146
	250	550	450	500	7	16	65	142	69.4	18	175
	280	550	450	500	7	16	75	142	79.9	20	175

~ Kg	
PAM B5	K 100390
160	390
180	390
200	455
225	461
250	480
280	480